

JUNO SERIES

JUNO features realistic natural movement and textures seen in stone and is available in four organic colours and two sizes.



PRODUCT TYPE: Glazed porcelain

COLOURS: Cream, Greige, Grey and Black

SIZES: 300x300mm, 300x600mm and 600x600mm
Rectified Edges

FINISHES/USAGE:

Matt/Wall and Floor

AESTHETIC QUALITIES:

Natural Movement

ORIGIN:

N/A

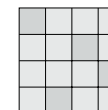
TECHNICAL DATA:

P3 Pendulum slip rating (Matt)
More technical data on last page

CERTIFICATIONS:



VARIATION:



V2

Variation is an inherent property of tiles and stone. Sizes are nominal and may include a joint.

JUNO SERIES

PRODUCT INFORMATION



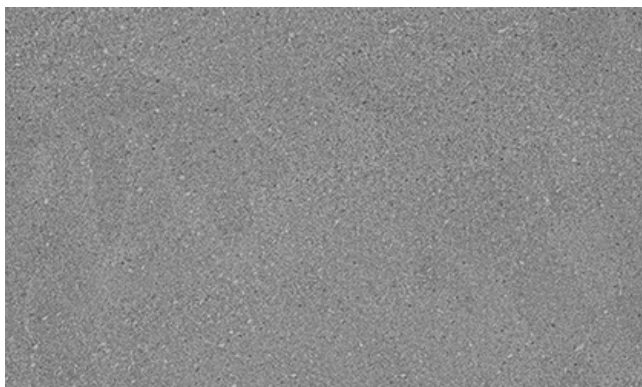
Cream

Matt 300x300mm | 300x600mm | 600x600mm



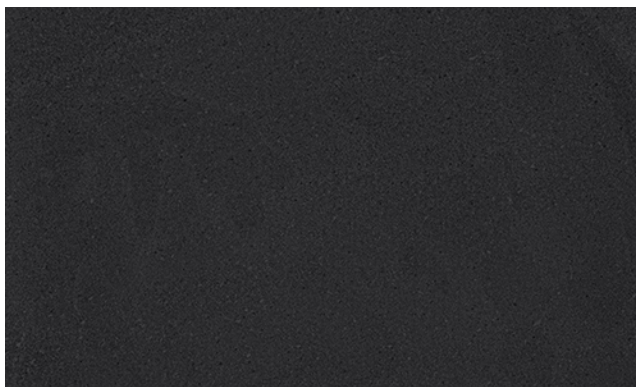
Greige

Matt 300x300mm | 300x600mm | 600x600mm



Grey

Matt 300x300mm | 300x600mm | 600x600mm



Black

Matt 300x300mm | 300x600mm | 600x600mm



Variation is an inherent property of tiles and stone. Sizes are nominal and may include a joint.

JUNO SERIES

LIFESTYLE IMAGES



Variation is an inherent property of tiles and stone. Sizes are nominal and may include a joint.

JUNO SERIES

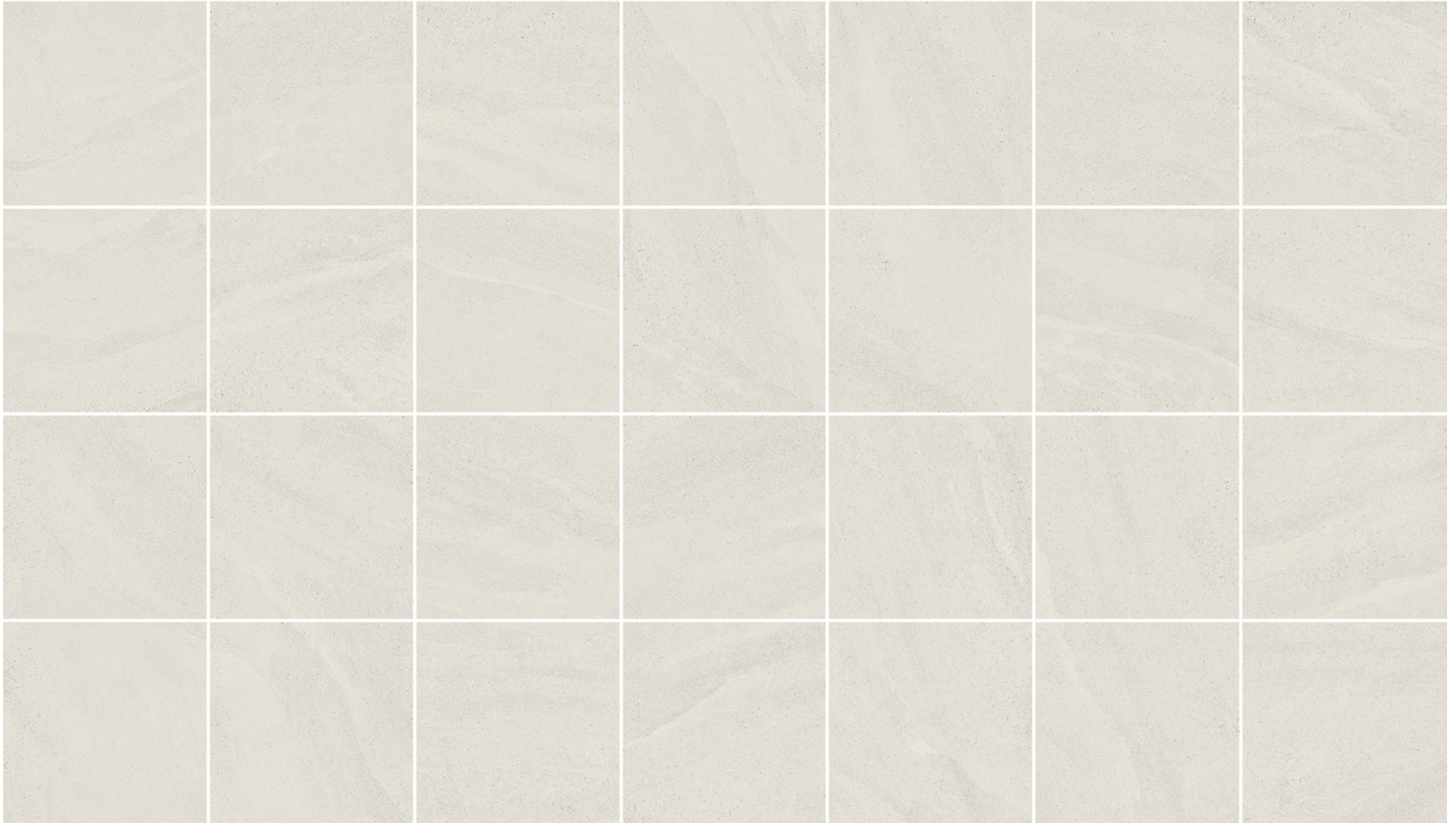
LIFESTYLE IMAGES



Variation is an inherent property of tiles and stone. Sizes are nominal and may include a joint.

JUNO SERIES

VARIATION - CREAM



Variation is an inherent property of tiles and stone. Sizes are nominal and may include a joint.

JUNO SERIES

VARIATION - GREIGE



Variation is an inherent property of tiles and stone. Sizes are nominal and may include a joint.

JUNO SERIES

VARIATION - GREY



Variation is an inherent property of tiles and stone. Sizes are nominal and may include a joint.

JUNO SERIES

VARIATION - BLACK



Variation is an inherent property of tiles and stone. Sizes are nominal and may include a joint.

JUNO SERIES

TECHNICAL DATA

| Technical Characteristics | Test Method | Requirement | Result |
|---------------------------|--------------|-----------------|-----------|
| Surface quality | ISO 10545-2 | 95% | 100% |
| Length and Width | ISO 10545-2 | ± 0,6% | 0.5% |
| Thickness | ISO 10545-2 | ± 0,5 | ± 0,5 |
| Straightness of sides | ISO 10545-2 | ± 0,5% | ± 0,3% |
| Water Absorbtion | ISO 10545-3 | 3% | 3% |
| Modulus of Rupture | ISO 10545-4 | 35 | 38 |
| Breaking Strength | ISO 10545-4 | 1100 | 1300 |
| Crazing Resistance | ISO 10545-11 | Pass | Resistant |
| Chemical Resistance | ISO 10545-13 | Declared Value | ULA / UHB |
| Stain Resistance | ISO 10545-14 | Minimum Class 3 | Class 5 |

CERTIFICATIONS



ISO 14001:2015 specifies the requirements for an environmental management system that an organization can use to enhance its environmental performance. ISO 14001:2015 is intended for use by an organization seeking to manage its environmental responsibilities in a systematic manner that contributes to the environmental pillar of sustainability.